

# Vscan Air™ SL

Sector-phased array and linear array dual-probe

See more. Treat faster.



## GE Vscan Air SL 手持式超音波

方便攜帶：手機般大小、重量僅218g

2-in-1雙探頭設計：線性 & 心臟

多種掃描模式：B-mode / Color Flow / M-mode / PW

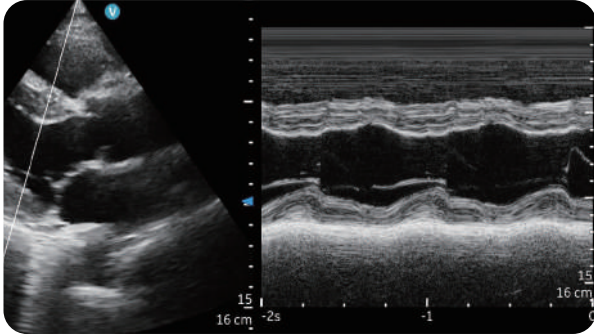
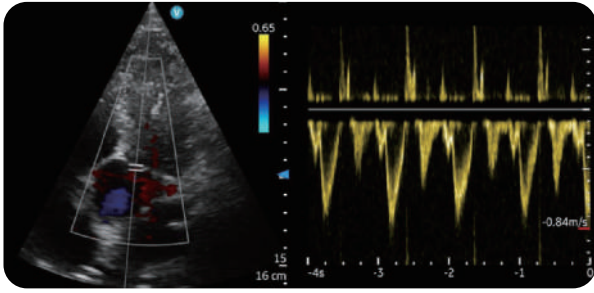
無限（無線）升級：無線掃描、無線傳輸、無線充電 (充電過程不斷線)

堅固耐用：全機IP67防水防塵、MIL-810G軍規防摔

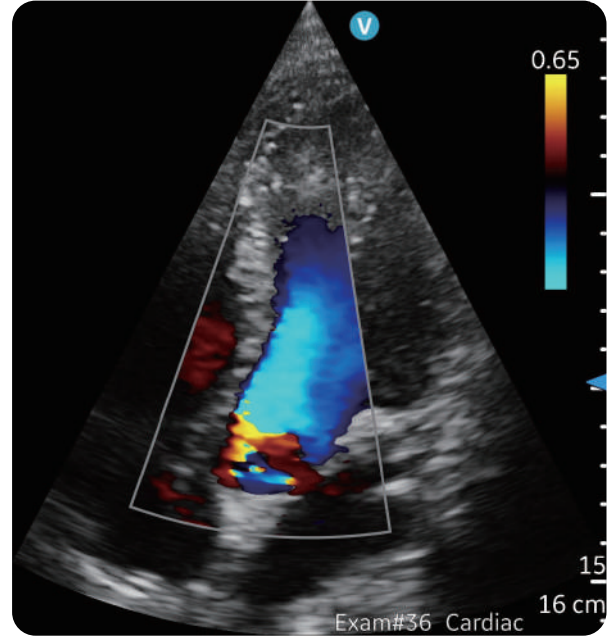
多樣化系統：兼容iOS / Android系統、支援DICOM傳輸

快速量測：提供心臟 / 產科計算工具

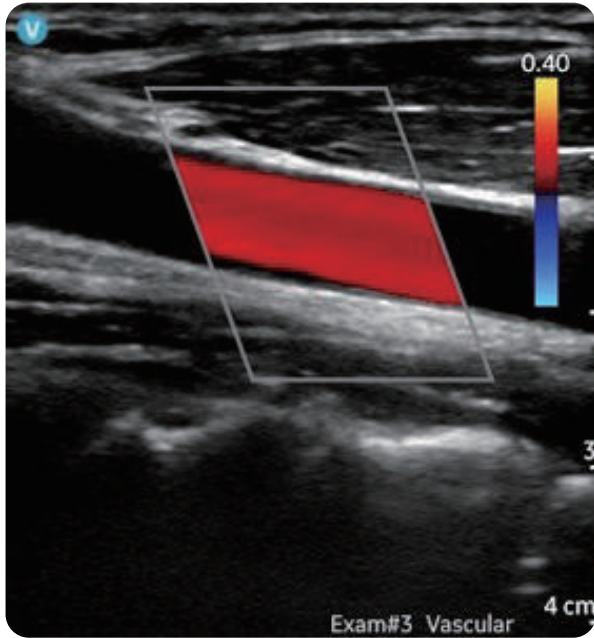
三年保固 (電池九個月)



Cardiac PW Doppler (top); M-mode (bottom)



Apical five chamber view with color



Common carotid artery with color flow

128 physical channel  
64 elements  
1.6-3.7 MHz  
Viewing angle Up to 90°  
Maximum depth 24cm

128 physical channel  
192 elements  
3-12 MHz  
Maximum depth 8cm

